

BLINDING AT THE BENCH

[blahyn-ding]
synonym • masking

The practice of not telling research personnel which experimental group the study subjects have been assigned to.

Why blind study personnel?

Blinding of study personnel prevents conscious and unconscious bias.



All study personnel can be blinded including animal caregivers, technicians administering treatment, and data analysts.

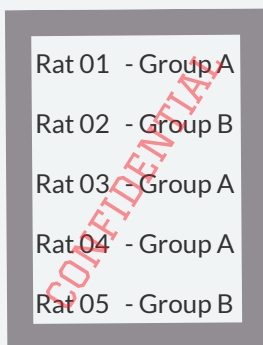


When blinding is not possible (i.e. diseased animals are visually identifiable), investigators should report this in the manuscript.

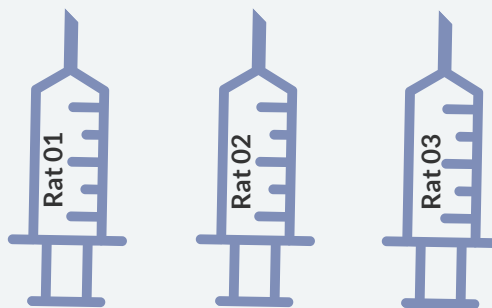


Best Practices

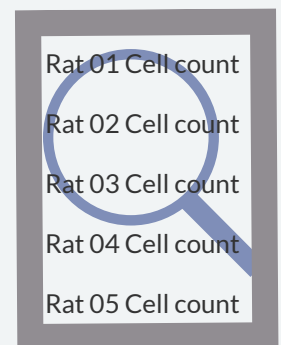
Assign a team member to be unblinded to study group allocation. This individual will be responsible for facilitating the study conduct without unblinding other members.



The unblinded team member will ensure that the interventions are indistinguishable. A blinded personnel will be responsible for administration.



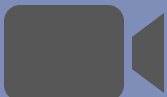
Data will be collected and recorded as per the subject ID code and statisticians will use the blinded data for analysis. Personnel can become unblinded after outcome assessment.



Tools and more information

Resources

- Blinding in wine tasting



Publications

- Emergency medicine animal research: does use of randomization and blinding affect the results? Academic Emergency Medicine, 2003.

